

Diversity Data on Faculty Members and Full-Time Undergraduates Fall 2016

When reporting campus population data to the federal government, institutions use a set of race/ethnicity categories that identify non-U.S. citizens as "nonresident aliens" regardless of their race/ethnicity. The tables below show those figures as well as the ones that result when we count our non-U.S. students and faculty members by their race/ethnicities. These approaches yield two different measures of student and faculty diversity, neither of which is necessarily more accurate. However, for some purposes, we are interested in knowing our percentage of "domestic" students and faculty of color. It should be noted that some students and faculty members counted as U.S. citizens are (a) foreign-born, naturalized citizens, (b) permanent residents, or (c) dual citizens.

FALL 2016 FULL-TIME FACULTY MEMBERS

	ONLY U.S. CITIZENS COUNTED BY RACE/ETHNICITY		ALL FACULTY COUNTED BY RACE/ETHNICITY	
	#	%	#	%
American Indian or Alaska Native	1	0.6%	1	0.6%
Asian	14	7.9%	23	13.0%
Black or African American	10	5.6%	11	6.2%
Hispanic or Latino	8	4.5%	10	5.6%
Native Hawaiian or Other Pacific Islander		0.0%		0.0%
Two or more races		0.0%		0.0%
White	123	69.5%	132	74.6%
Race unreported		0.0%		0.0%
Nonresident Alien	21	11.9%		
TOTALS	177	100.0%	177	100.0%

% U.S. citizen faculty of color	18.6%
% faculty of color	25.4%

Source: Office of Institutional Research tallies using Common Data Set guidelines

FALL 2016 FULL-TIME UNDERGRADUATES

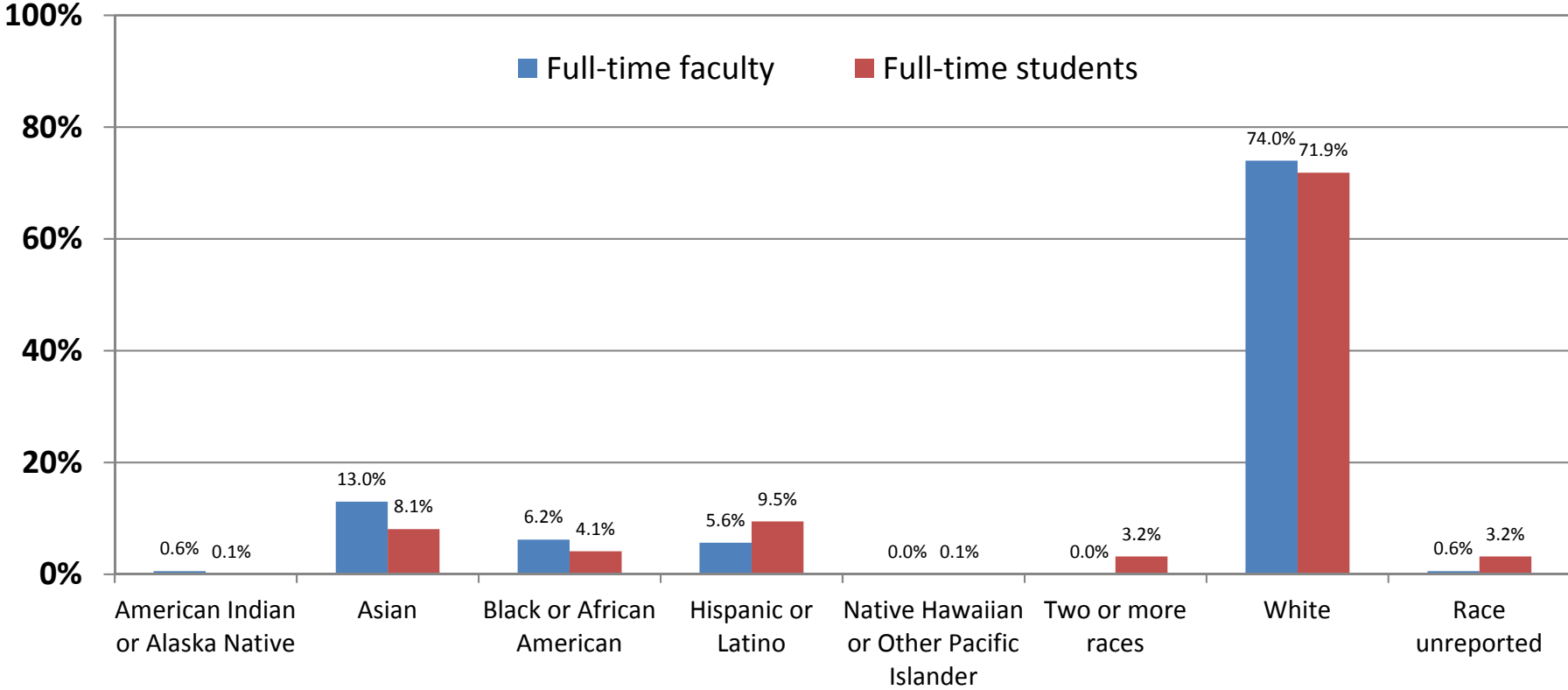
	ONLY U.S. CITIZENS COUNTED BY RACE/ETHNICITY		ALL STUDENTS COUNTED BY RACE/ETHNICITY	
	#	%	#	%
American Indian or Alaska Native	1	0.1%	1	0.1%
Asian	80	4.4%	147	8.1%
Black or African American	70	3.8%	75	4.1%
Hispanic or Latino	159	8.7%	172	9.5%
Native Hawaiian or Other Pacific Islander	1	0.1%	1	0.1%
Two or more races	57	3.1%	58	3.2%
White	1,277	70.2%	1,307	71.9%
Race unreported	48	2.6%	58	3.2%
Nonresident Alien	126	6.9%		
TOTALS	1,819	100.0%	1,819	100.0%

% U.S. citizen students of color	20.2%
% students of color	25.0%

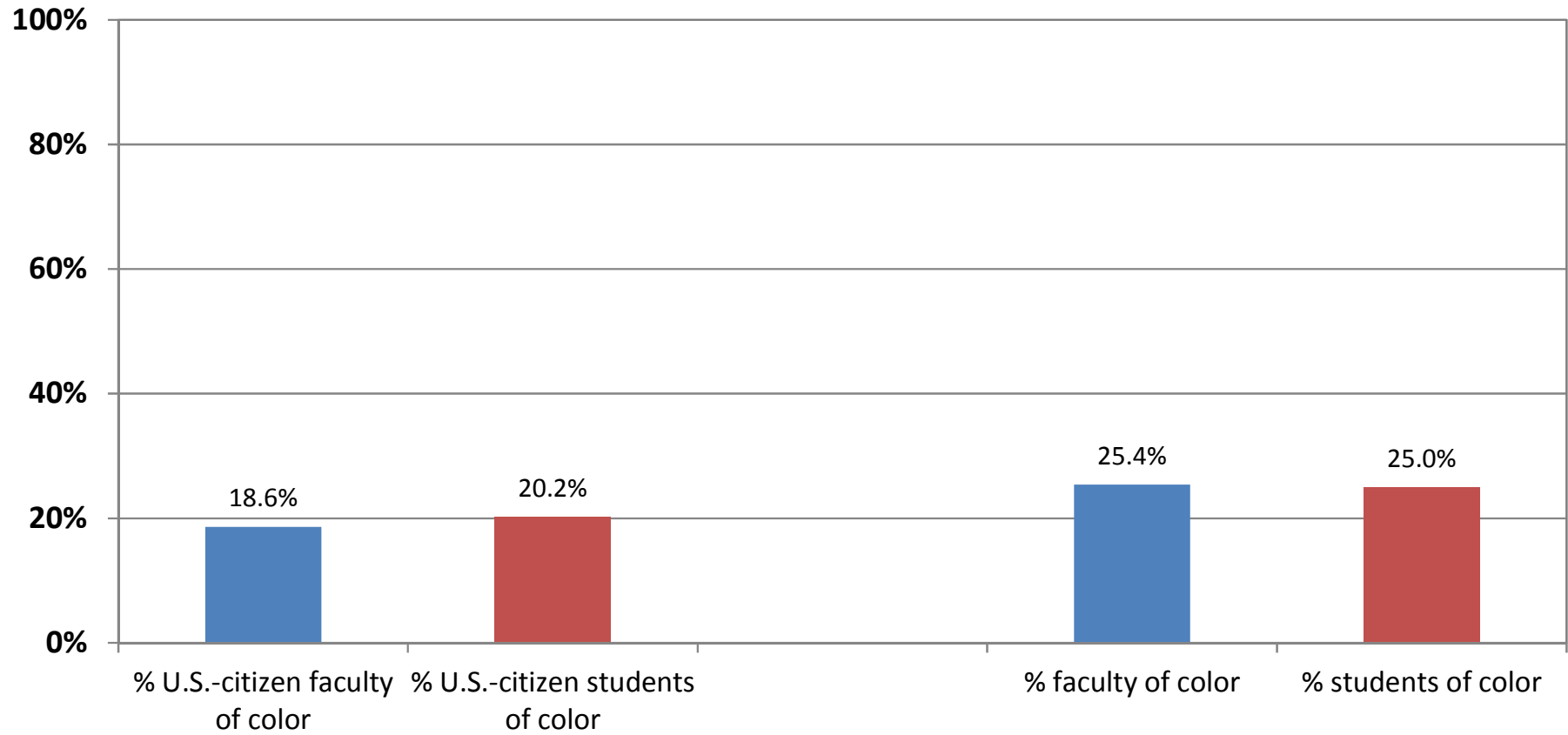
Source: Office of the Registrar, IPEDS Fall Enrollment Survey 2016

Fall 2016 Full-Time Faculty Members' and Students' Race/Ethnicity

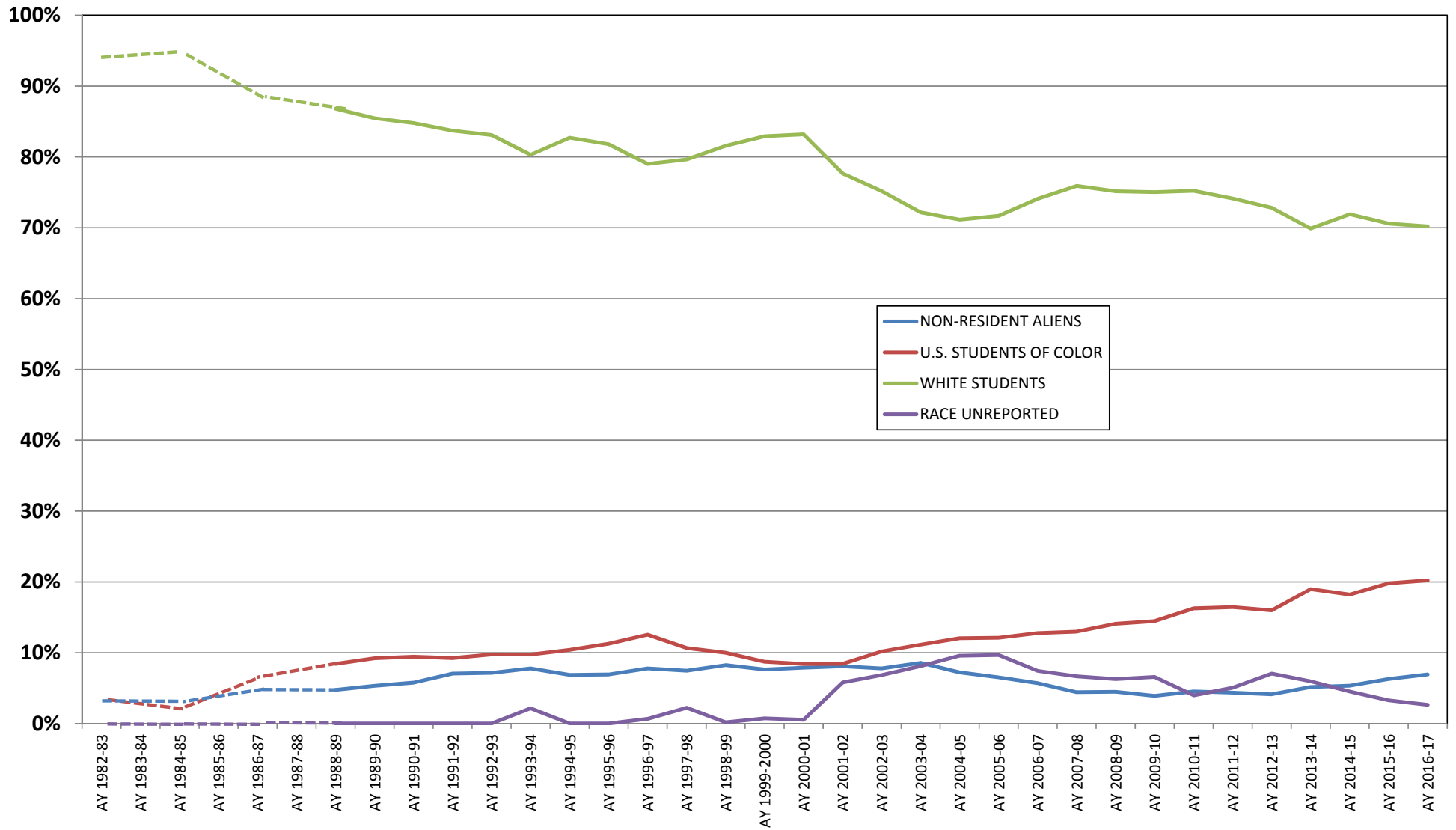
"Nonresident alien" faculty and students counted here by their race/ethnicity



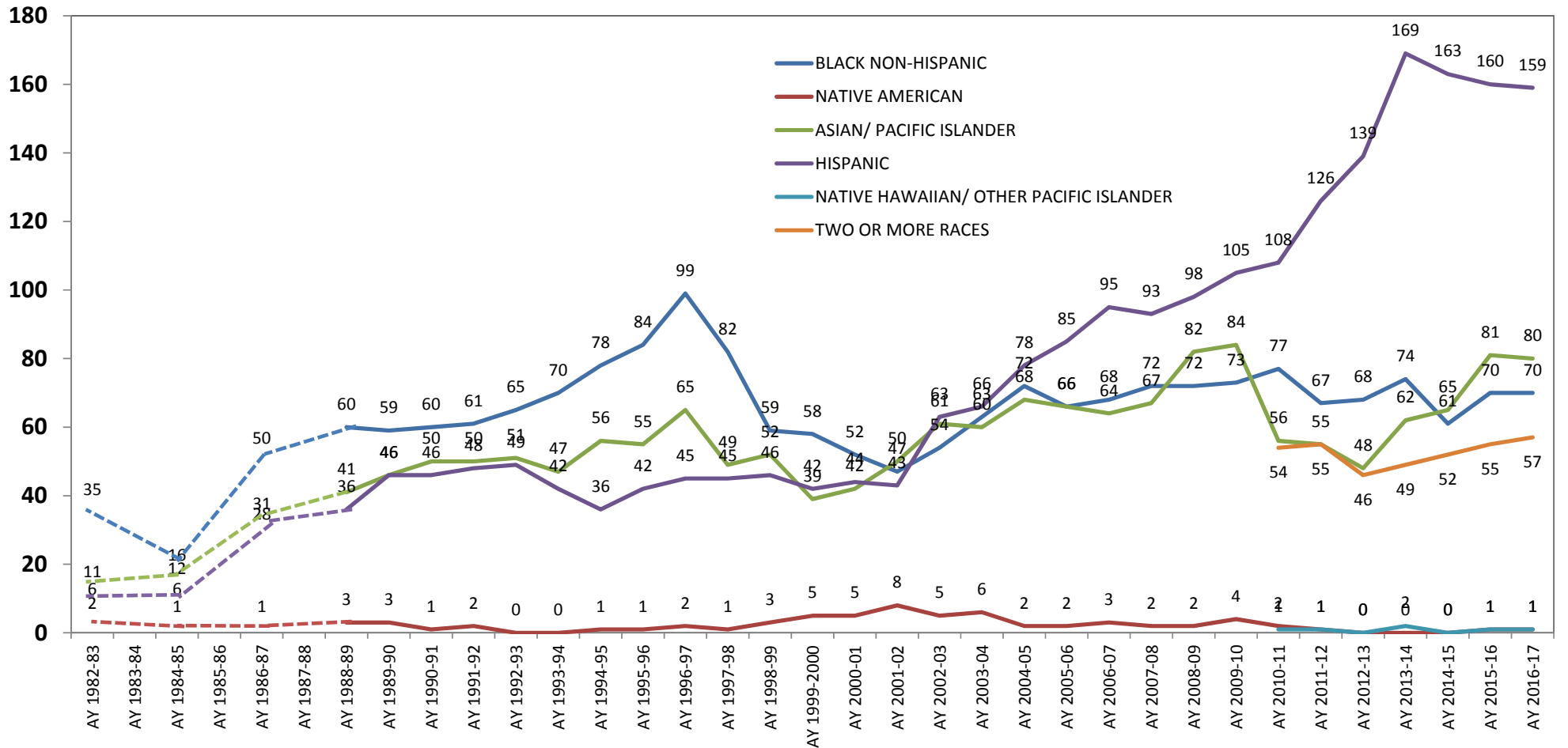
Fall 2016 Faculty and Students of Color



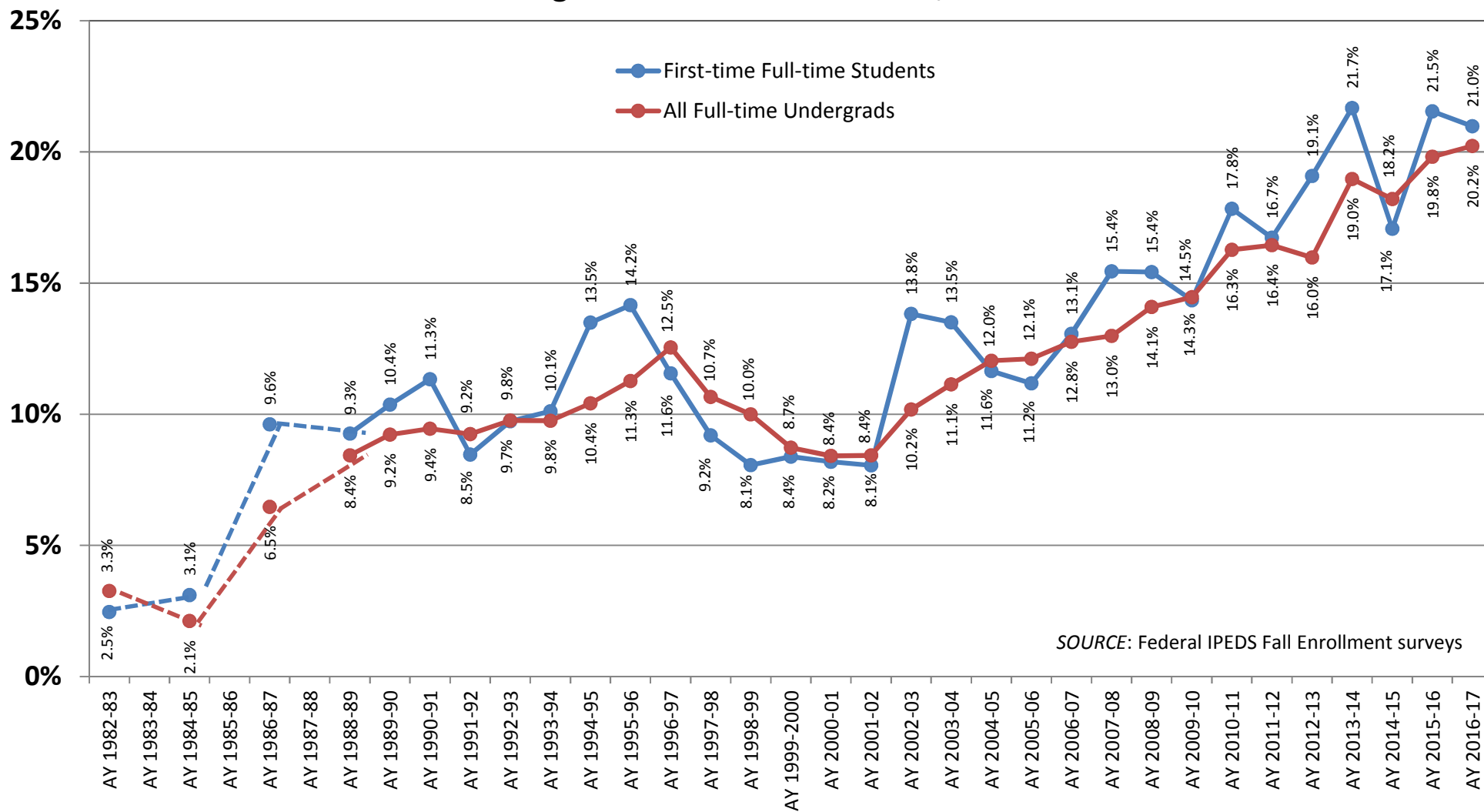
Connecticut College Full-Time Undergraduate Enrollments, Fall 1982 to Fall 2016



Numbers of Full-Time Undergraduate U.S. Students of Color



Historical Percentage of U.S. Students of Color, Fall 1982 to Fall 2016



Faculty of Color, Fall 2004 to Present

